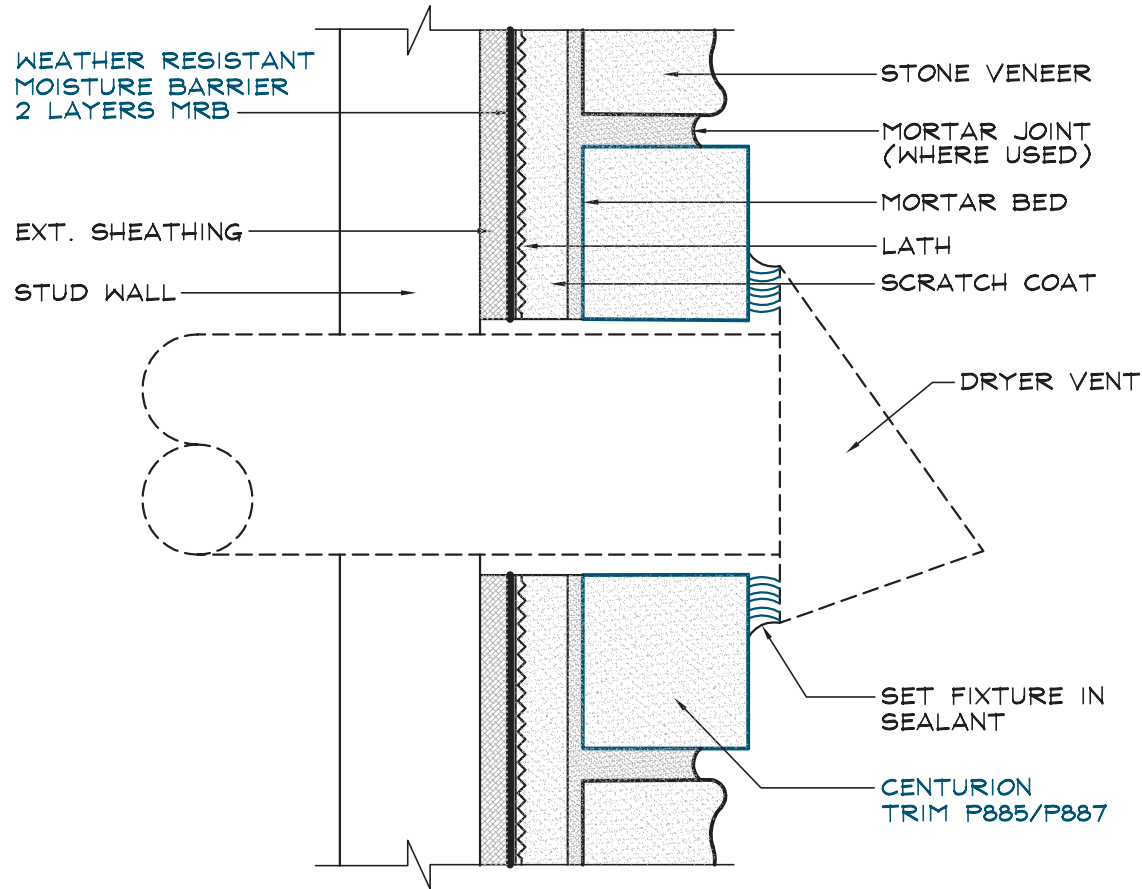


COACH TRIM/DRYER VENT

P885 / P887



**SPECIFICATIONS:**

APPLIED: PER CENTURION STONE VENEER  
INSTALLATION PROCEDURES REFERENCE  
ICC ES REPORT ESR-2239 FOR SPECIFIC CODE  
REQUIREMENTS

NOTE: BE SURE TO BED ALL COVERS AND FLANGES  
IN SEALANT BEFORE FASTENING TO WALL.

NOT TO SCALE



Centurion Products, LLC.  
7201 Cockrill Bend Blvd  
Nashville, TN 37209  
www.Centurionstone.com

**COACH TRIM/DRYER VENT**  
**P885 / P887**

K1