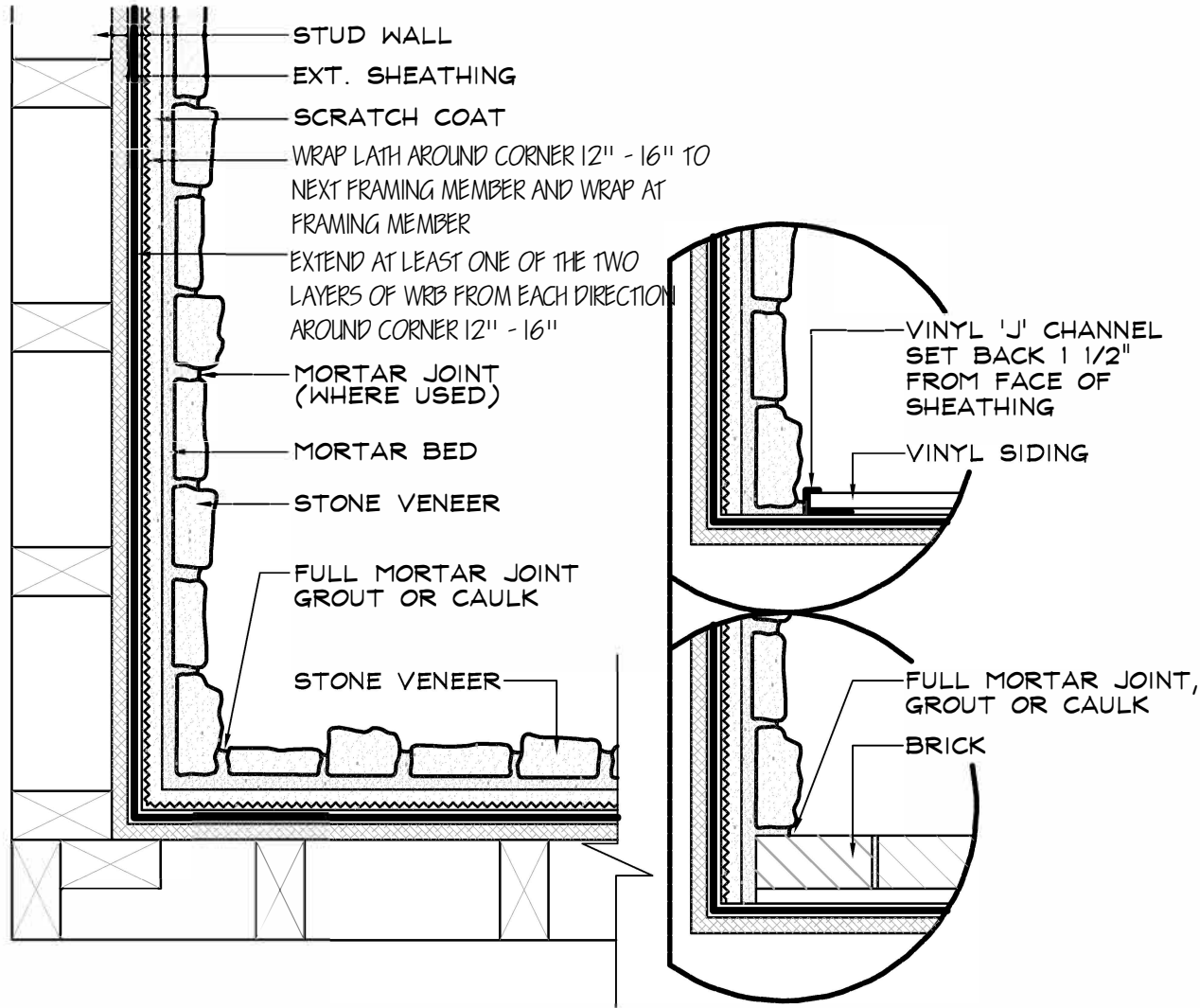


INSIDE CORNER DETAIL



SPECIFICATIONS:

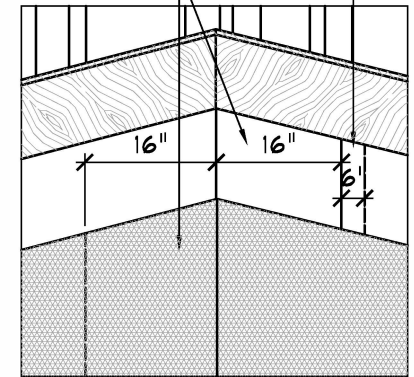
install the corners first for easiest fitting, pieces should be alternated in opposite directions on the wall corner

lap lath a minimum 16 inches around all inside and outside corners. do not pull lath to tightly at corners or edges.

APPLIED: PER CENTURION STONE VENEER INSTALLATION PROCEDURES REFERENCE ICC ES REPORT ESR-2239 FOR SPECIFIC CODE REQUIREMENTS

LAP BARRIER 6" ON VERT. JOINTS AND MIN. OF 2" ON HORIZ. JOINT **** (References 2 layers)**

LAP BARRIER AND LATH TO THE NEXT FRAMING MEMBER FROM INSIDE CORNERS



WOOD CONSTRUCTION OR RIGID FOAM

NOT TO SCALE



Centurion Products, LLC.
7201 Cockrill Bend Blvd.
Nashville, TN 37209
www.Centurionstone.com

INSIDE CORNER DETAIL

13