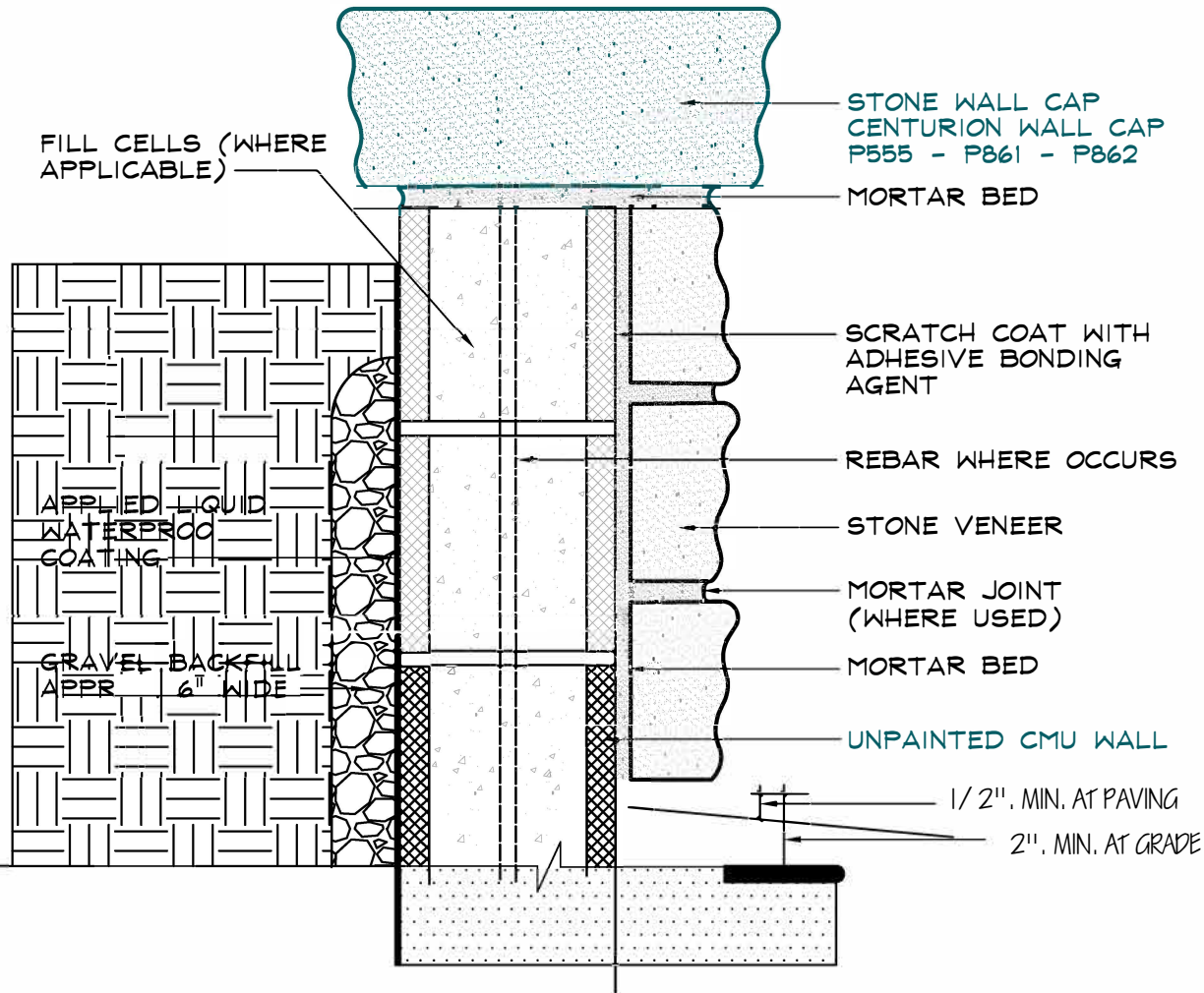


CMU WALL / STONE ON ONE SIDE



SPECIFICATIONS:

APPLIED: PER CENTURION STONE VENEER INSTALLATION PROCEDURES REFERENCE ICC ES REPORT ESR-2239 FOR SPECIFIC CODE REQUIREMENTS

over clean masonry:

no surface preparation is necessary provided the surface is clean and free of contaminates such as dirt, dust, release agents, sealers, and form oils. note: see centurion installation procedures for removing these contaminates.

CMU WALL	WALL CAP
8"	FLATCAP P555
	BEVELED CAP P861
12"	BEVELED CAP P862

NOT TO SCALE



Centurion Products, LLC.
7201 Cockrill Bend Blvd.
Nashville, TN 37209
www.CenturionStone.com

**CMU WALL /
STONE ON ONE SIDE**

B1