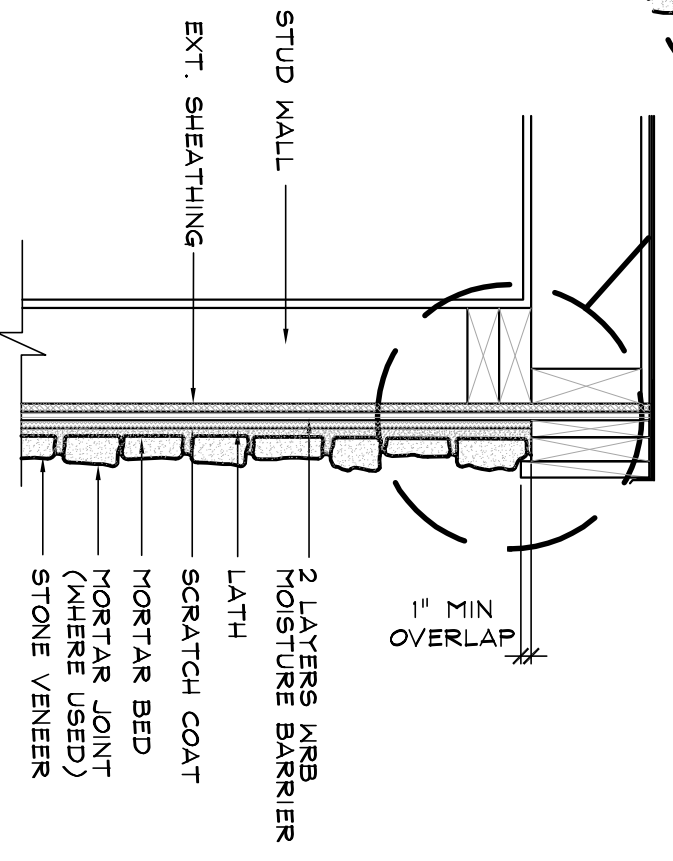


Specifications:

APPLIED : PER CENTURION STONE  
 VENEER INSTALLATION PROCEDURES  
 REFERENCE ICC ES REPORT ESR-2239  
 FOR SPECIFIC CODE REQUIREMENTS



EAVE DETAIL W/ FREEZE BOARD

FLUSH RAKE DETAIL W/ FREEZE BOARD

NOT TO SCALE



**CENTURION**  
 STONE

Centurion Products, Inc  
 50 Van Buren Street  
 Nashville, TN 37208  
 www.centurionstone.com

EAVE DETAIL W/ FREEZE BOARD

D.0.2