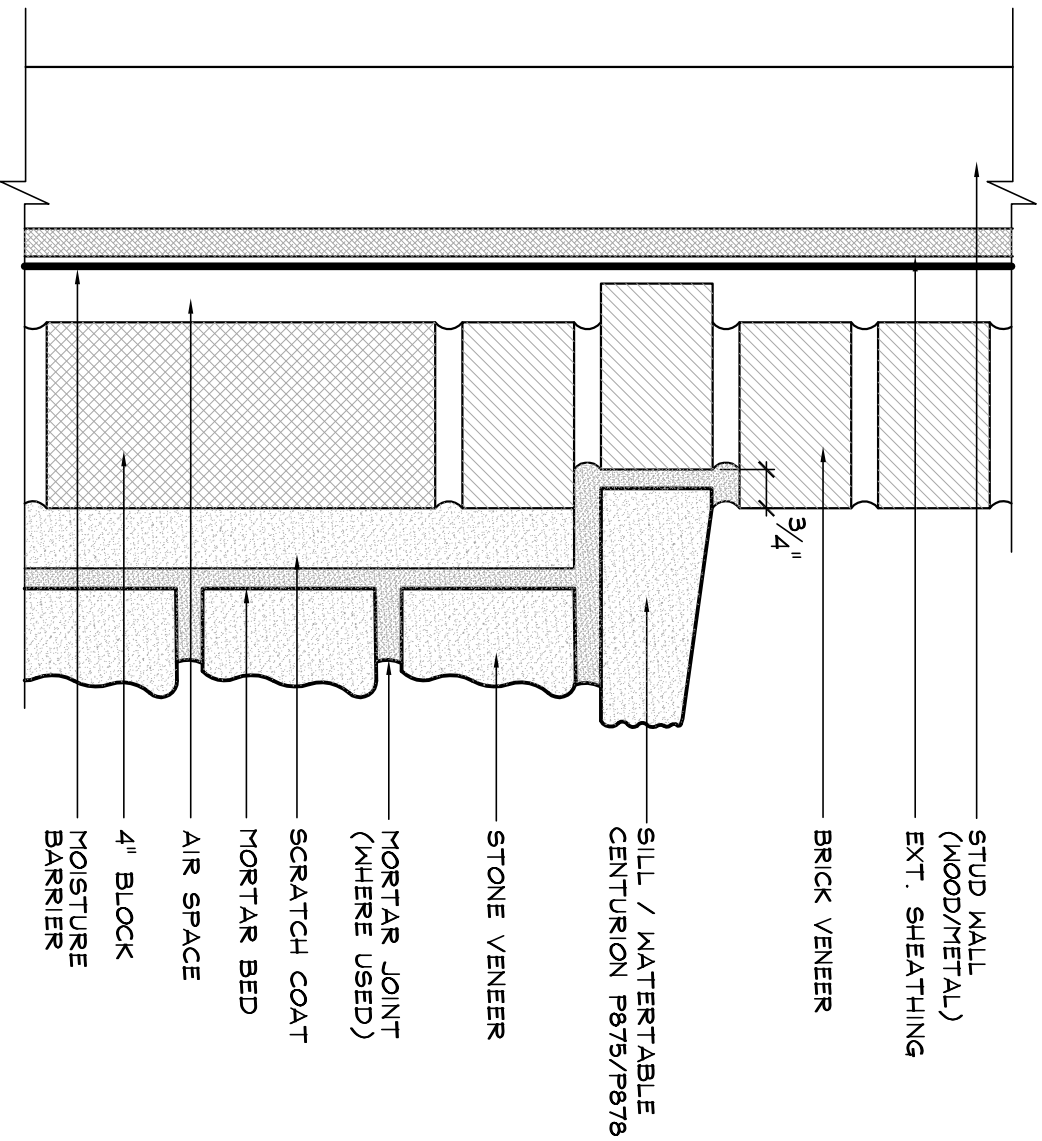


WATERTABLE SET INTO BRICK



Specifications :
 WHEN INSTALLING WATERTABLE IN BRICK WALL, OFFSET BRICK 3/4" ON BRICK COURSE WHERE WATERTABLE IS INSTALLED.

APPLIED : PER CENTURION STONE VENEER INSTALLATION PROCEDURES REFERENCE ICC ES REPORT ESR-2239 FOR SPECIFIC CODE REQUIREMENTS

NOT TO SCALE



Centurion Products, Inc
 50 Van Buren Street
 Nashville, TN 37208
 www.centurionstone.com

WATERTABLE SET INTO BRICK

H.0.6