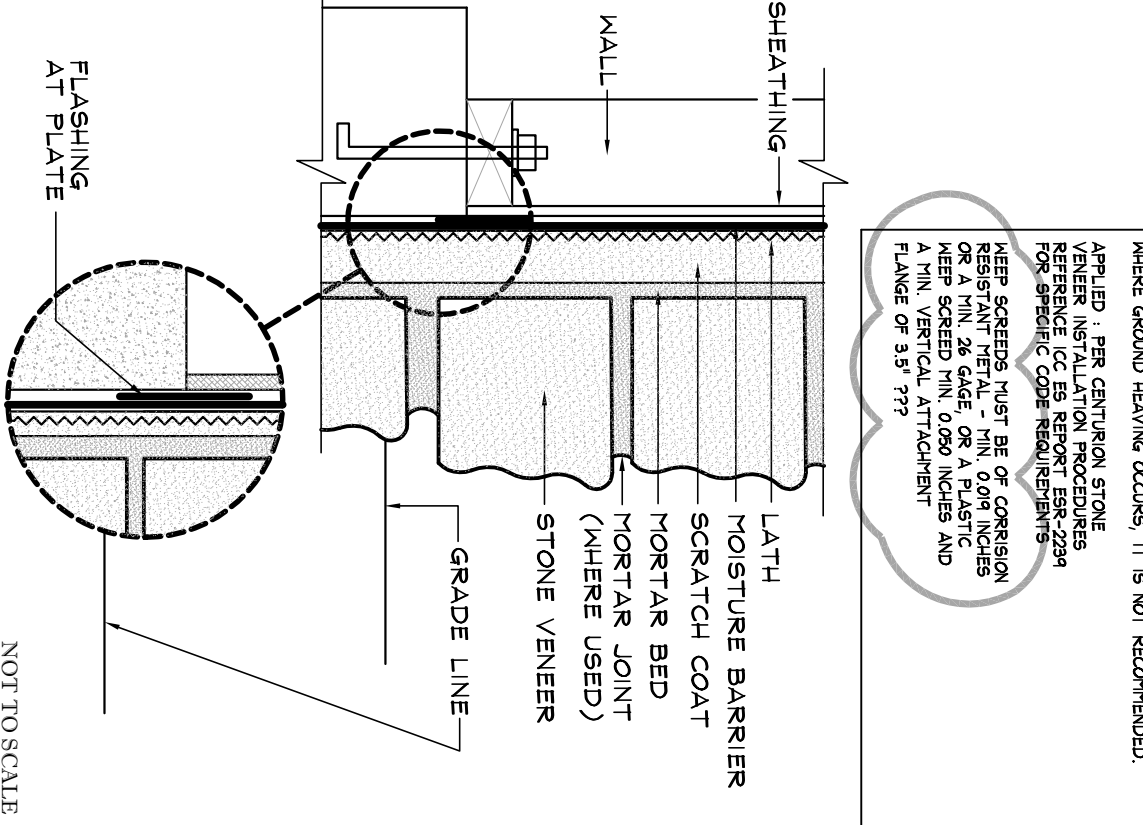
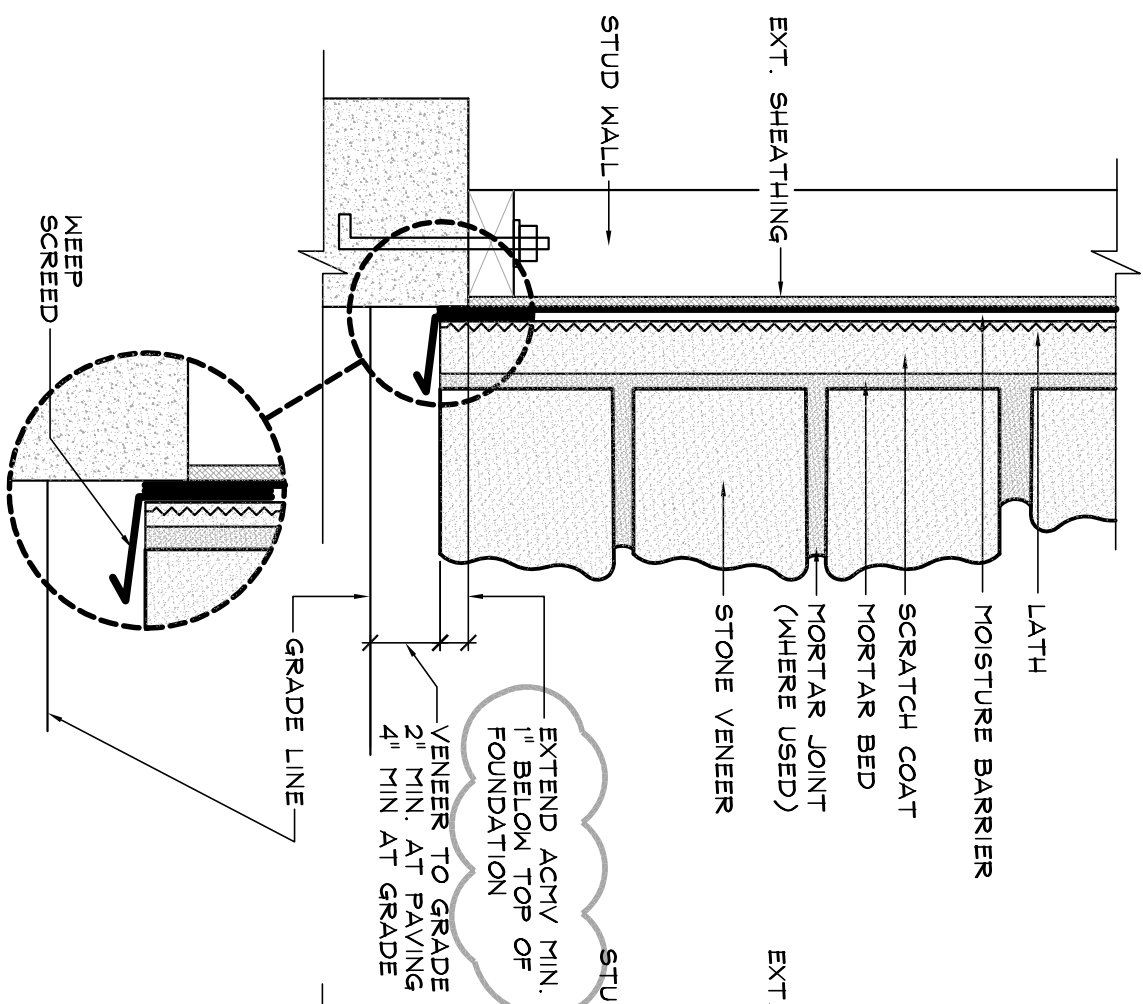


STONE VENEER AND GRADE



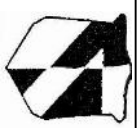
Specifications :

STONE VENEER MAY BE APPLIED TO OR BELOW GRADE PROVIDING IT MEETS LOCAL BUILDING CODE REQUIREMENTS. IN AREAS WHERE GROUND HEAVING OCCURS, IT IS NOT RECOMMENDED.

APPLIED : PER CENTURION STONE VENEER INSTALLATION PROCEDURES REFERENCE ICC ES REPORT ESR-2239 FOR SPECIFIC CODE REQUIREMENTS

MEEP SCREEDS MUST BE OF CORROSION RESISTANT METAL - MIN. 0.019 INCHES OR A MIN. 26 GAGE, OR A PLASTIC MEEP SCREED MIN. 0.050 INCHES AND A MIN. VERTICAL ATTACHMENT FLANGE OF 3.5" ???

NOT TO SCALE



Centurion
STONE

Centurion Products, Inc
50 Van Buren Street
Nashville, TN 37208
www.centurionstone.com

STONE VENEER AND GRADE

J.0.2