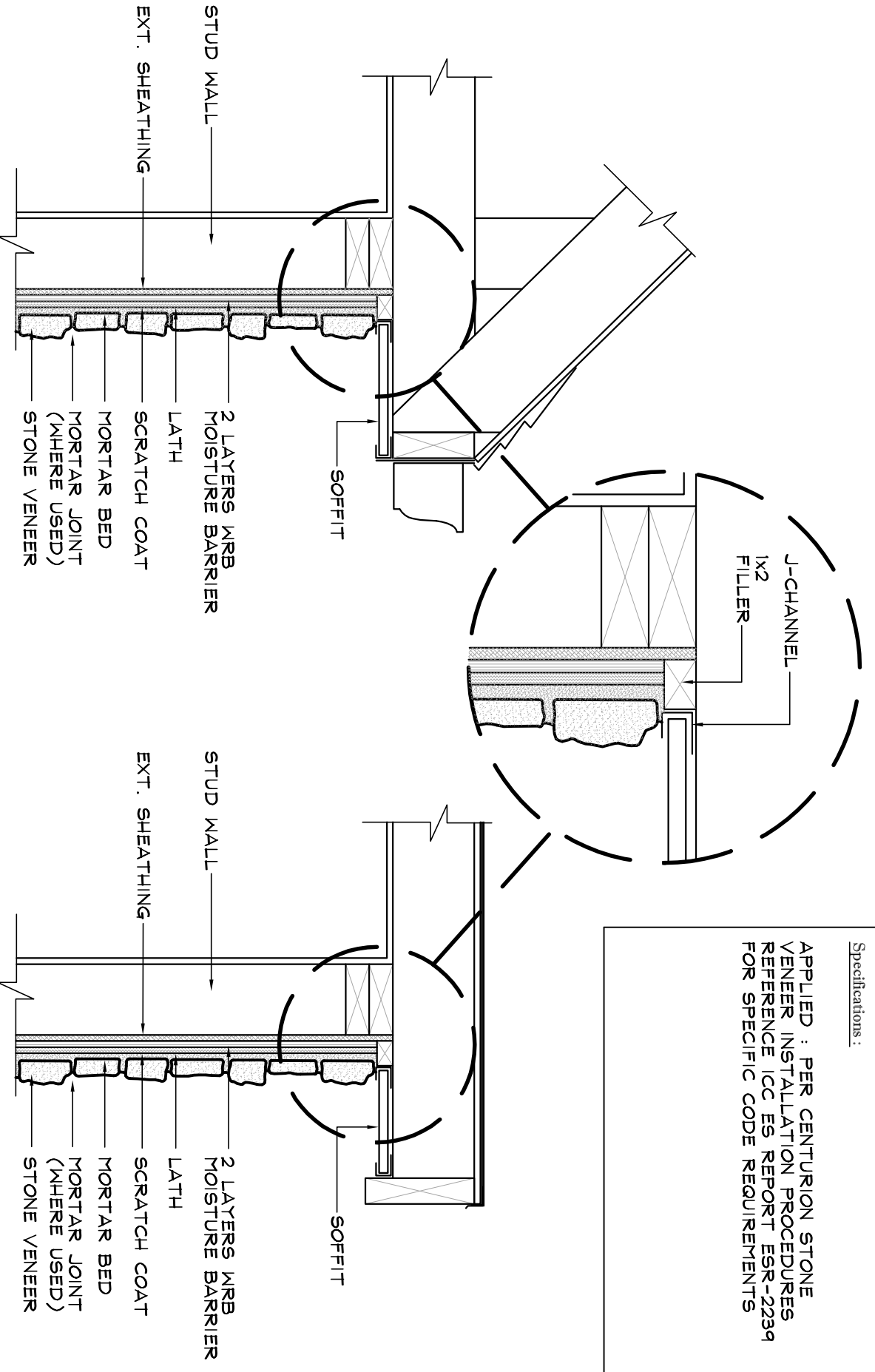


Specifications :

APPLIED : PER CENTURION STONE
 VENEER INSTALLATION PROCEDURES
 REFERENCE ICC ES REPORT ESR-2239
 FOR SPECIFIC CODE REQUIREMENTS



STANDARD EAVE DETAIL

RAKE WITH OVERHANG DETAIL

NOT TO SCALE



Centurion
 STONE

Centurion Products, Inc
 50 Van Buren Street
 Nashville, TN 37208
 www.centurionstone.com

STANDARD EAVE DETAIL

D.0.1