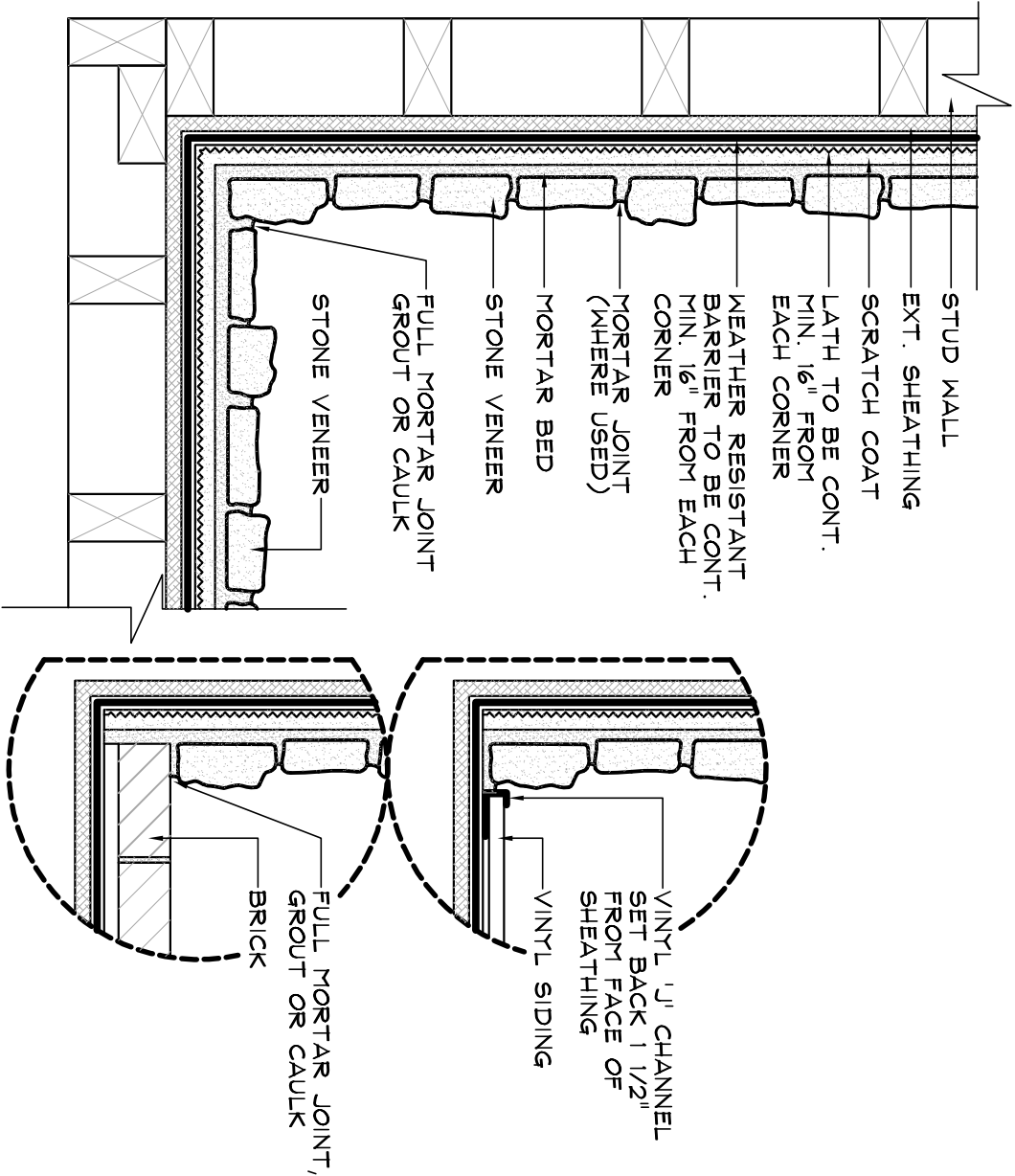


INSIDE CORNER DETAIL



Specifications :

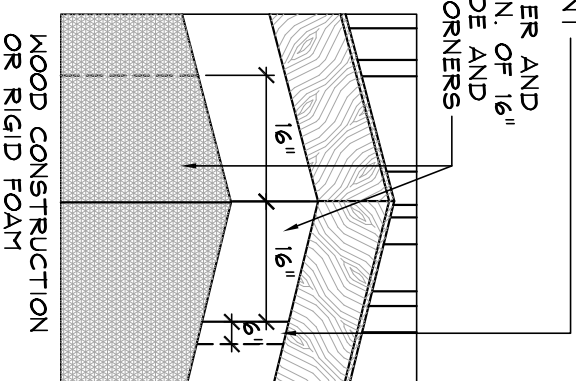
INSTALL THE CORNERS FIRST FOR EASIEST FITTING, PIECES SHOULD BE ALTERNATED IN OPPOSITE DIRECTIONS ON THE WALL CORNER.

LAP LATH A MINIMUM 1/8 INCHES AROUND ALL INSIDE AND OUTSIDE CORNERS. DO NOT PULL LATH TO TIGHTLY AT CORNERS OR EDGES.

APPLIED : PER CENTURION STONE VENEER INSTALLATION PROCEDURES REFERENCE ICC ES REPORT ESR-22394 FOR SPECIFIC CODE REQUIREMENTS

LAP BARRIER 6" ON VERT. JOINTS AND MIN. OF 2" ON HORIZ. JOINT

LAP BARRIER AND LATH A MIN. OF 1/8" FROM INSIDE AND OUTSIDE CORNERS



NOT TO SCALE



Centurion Products, Inc
50 Van Buren Street
Nashville, TN 37208
www.centurionstone.com

INSIDE CORNER DETAIL

M.O.1