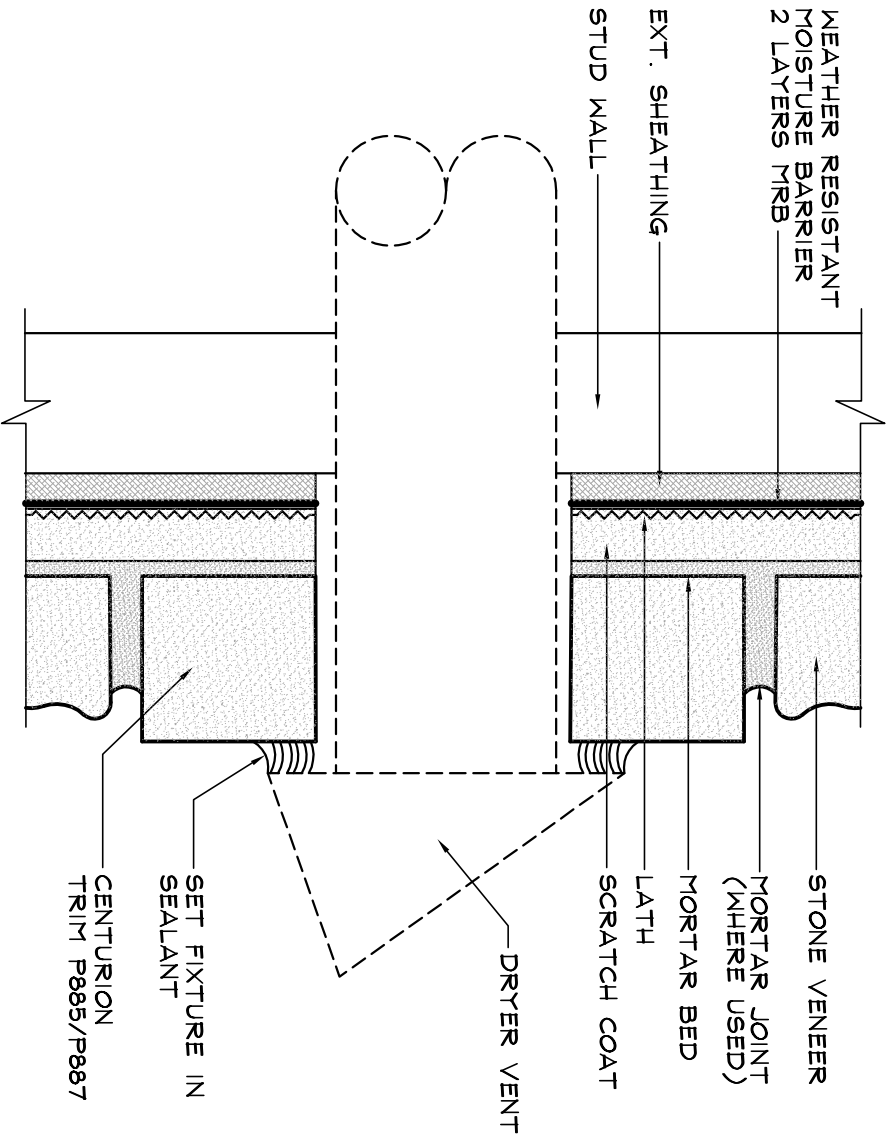


COACH TRIM/DRYER VENT P703



Specifications :

APPLIED : PER CENTURION STONE VENEER INSTALLATION PROCEDURES REFERENCE ICC ES REPORT ESR-2239 FOR SPECIFIC CODE REQUIREMENTS

NOTE : BE SURE TO BED ALL COVERS AND FLANGES IN SEALANT BEFORE FASTENING TO WALL

NOT TO SCALE



CENTURION
STONE

Centurion Products, Inc
50 Van Buren Street
Nashville, TN 37208
www.centurionstone.com

COACH TRIM/DRYER VENT P885/P887

M.0.5