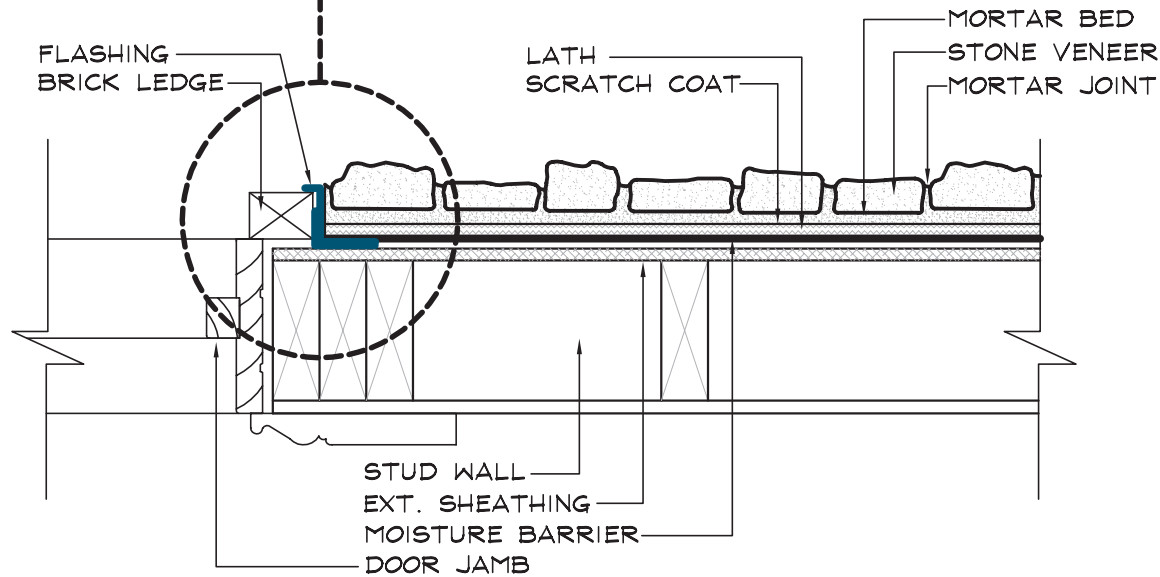


MOISTURE BARRIER

FLASHING

SELF-ADHERED FLASHING

BRICK LEDGE



FLASHING
BRICK LEDGE

LATH
SCRATCH COAT

MORTAR BED
STONE VENEER
MORTAR JOINT

STUD WALL
EXT. SHEATHING
MOISTURE BARRIER
DOOR JAMB

SPECIFICATIONS:

APPLIED: PER CENTURION STONE VENEER INSTALLATION PROCEDURES REFERENCE ICC ES REPORT ESR-2239 FOR SPECIFIC CODE REQUIREMENTS

NOTE: DOOR FRAME PROFILES VARY REFER TO WINDOW MFR'S DETAILS FOR INSTALLATION AND FLASHING.

CASING BEAD AND BACKER ROD AND SEALANT ARE COMMERCIAL APPLICATION AND MAY BE OPTIONAL ON RESIDENTIAL. CHECK LOCAL CODE REQUIREMENTS FOR THIS OPTION.

NOT TO SCALE



Centurion Products, Inc.
50 Van Buren Street
Nashville, TN 37208
www.CenturionStone.com

STONE TO DOOR JAMB

D2